



# 120W (1/6 HP)

INDUCTION MOTORS Frame size 90mm sq. (3.54 in. sq.)

Single-Phase, Three-Phase

LEAD WIRE TYPE

## SPECIFICATIONS

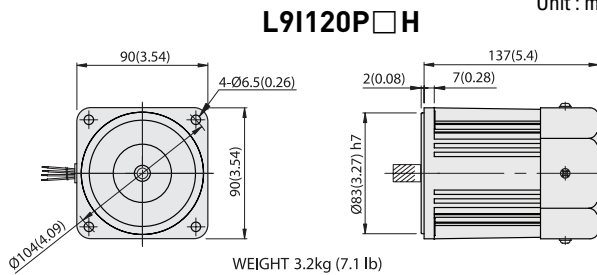
CONTINUOUS DUTY, INSULATION CLASS A or E, 4POLES

Model	Output		Voltage (V)	Frequency (Hz)	Rated					Starting Torque			Capacitor (μF)	
	(HP)	(W)			Input (W)	Current (A)	Torque			Speed (rpm)	(kg-cm)	(N-m)		(oz-in)
<b>L9I120□C</b>	1/6	120	1∅100	50	240	2.30	9.4	0.921	130.54	1250	6.1	0.598	84.71	30
60				240	2.30	7.6	0.745	105.54	1550	6.1	0.598	84.71		
<b>L9I120□D</b>	1/6	120	1∅200	50	240	0.95	9.4	0.921	130.54	1250	6.1	0.598	84.71	8
60				240	1.10	7.6	0.745	105.54	1550	6.1	0.598	84.71		
<b>L9I120□B</b>	1/6	120	1∅220	60	250	1.2	7.4	0.725	102.76	1600	6.8	0.666	94.43	7
<b>L9I120□E</b>	1/6	120	1∅115	60	250	2.3	7.4	0.725	102.76	1600	5.9	0.578	81.93	25
<b>L9I120□X</b>	1/6	120	1∅220~240	50	250	1.0	9.4	0.921	130.54	1250	6.8	0.666	94.43	7
<b>L9I120□U</b>	1/6	120	3∅200	50	200	0.71	8.7	0.853	120.82	1350	22	2.156	305.51	-
				60	200	0.67	7.6	0.745	105.54	1550	17	1.666	236.08	
<b>L9I120□T</b>	1/6	120	3∅200~230	50	240	0.88	8.7	0.853	120.82	1350	27	2.646	374.95	-
				60	240	0.82	7.4	0.725	102.76	1600	21	2.058	291.63	
<b>L9I120□S</b>	1/6	120	3∅380~415	50	240	0.51	8.7	0.853	120.82	1350	27	2.646	374.95	-
				60	240	0.48	7.4	0.725	102.76	1600	21	2.058	291.63	
<b>L9I120□R</b>	1/6	120	3∅440	50	240	0.45	8.7	0.853	120.82	1350	27	2.646	374.95	-
				60	240	0.41	7.4	0.725	102.76	1600	21	2.058	291.63	

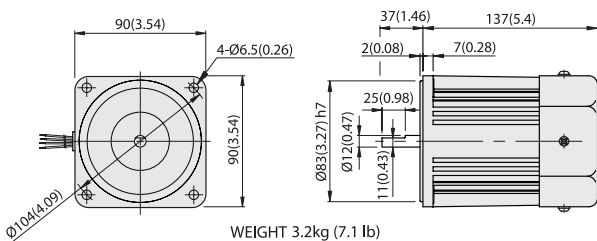
- \* Model in grey screen represents the motors with THERMALLY PROTECTED according to UL regulation.
- \* Model in dark grey screen represents the motors with THERMALLY PROTECTED according to CE regulation.
- \* In case of some models certificated for export, the special cord like CE or UL is added after the existing model no. ex) L9I60□XH-CE, L9I60□EH-UL.
- \* Insulation class for motors which acquired certificates for export is B.

## DIMENSIONS

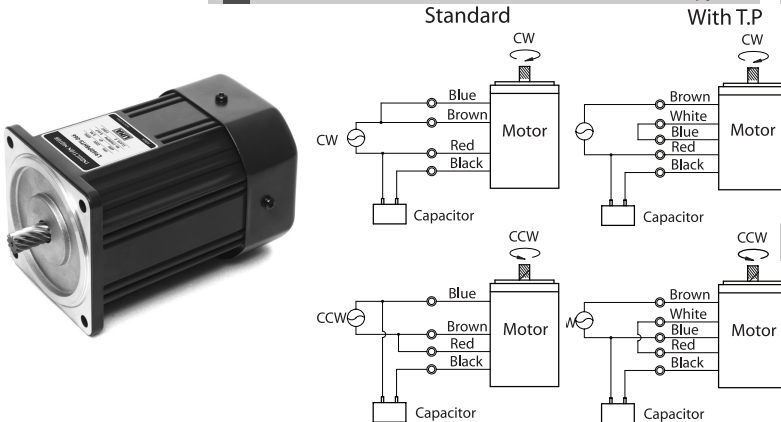
Unit : mm(inch)



## L9I120D□

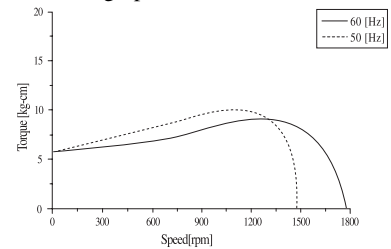


## CONNECTION DIAGRAMS (4-lead wire type)

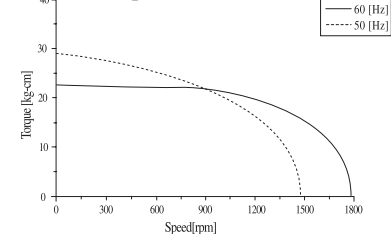


## SPEED-TORQUE CURVE

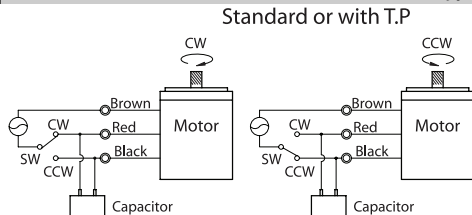
### Single phase L9I120□□



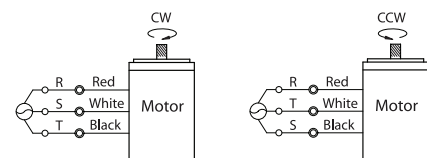
### Three phase L9I120□□



## CONNECTION DIAGRAMS (3-lead wire type)



## CONNECTION DIAGRAMS (3 phase)



The direction of rotation is seen from the end of motor shaft.